

A. GENERAL NOTES:

1. ALL DIMENSION ARE IN MM UNLESS OR OTHERWISE SPECIFIED.
2. ALL EXTERNAL PLASTER ARE IN 18 MM TH AND INTERNAL PLASTER ARE 12 MM TH.
3. ALL EXTERNAL WALL'S ARE 200 MM TH AND INTERNAL WALL'S ARE 100 MM TH OR OTHERWISE MENTIONED.
4. ALL ELECTRICAL AND PLUMBING WORKS ARE CONSIDERED AS PER I.S. CODE.

B. STRUCTURAL NOTE:

1. ALL DIMENSION ARE IN MM UNLESS OR OTHERWISE SPECIFIED.
2. THIS DRAWING SHALL BE READ IN CONJUNCTION WITH RELEVANT ARCHITECTURAL DRGS.
3. FOR LOCATION OF THE BUILDING REFER ARCH. BLOCK LAYOUT PLAN.
4. F.G.L SHALL BE FIXED AT SITE AS PER SITE DECISION AND SHALL BE CONSIDERED AS (+)0.00M.
5. BEARING CAPACITY OF SOIL = CONSIDERED AS 8.0 MT/M².
6. GRADE OF CONCRETE = M-25, DESIGN MIX (U.O.M)
7. STEEL = F6500.
8. CEMENT = EQUIVALENT TO 53.
9. CLEAR COVER TO REINF
 - a) FOUNDATION AND FOUNDATION BEAM=50MM
 - b) COLUMN= 40 MM
 - c) TIE BEAM=30 MM
 - d) STAIR=25 MM
 - e) SLAB TOP AND BOTTOM=20MM AND END=25MM
 - f) FLOOR BEAM=25 MM
10. ANTI TERMITE TREATMENT SHALL BE DONE AS PER RELEVANT I.S. CODES.
11. 50 TH D.P.C. (1:1:2) WITH WATER PROOFING ADMIXTURE SHALL BE PROVIDED AT PLINTH LEVEL OVER ALL BRICK WORK BELOW PLINTH LEVEL.
12. CHAIR SHALL BE PROVIDED BETWEEN TWO LAYERS OF SLAB REINFORCEMENT WHEREVER REQUIRED.
13. SPACE BAR OF SUITABLE DIA SHALL BE PROVIDED BETWEEN TWO LAYERS OF BEAM REINFORCEMENT WHEREVER REQUIRED.
14. ALL CONCRETE SHALL BE MIXED BY MIXER M/C AND SHALL BE COMPACTED BY MECHANICAL VIBRATOR.
15. ANY DISCREPANCY OF THE CONSULTANT PRIOR TO EXECUTION.
16. FOR ANY OTHER GUIDELINE NOT STATED IN THIS DRAWING RELEVANT I.S. CODED ARE NOT TO BE FOLLOWED.

C. AREA CALCULATION:

1. PLOT AREA = 2 NOS CV/05-202 66SSOM CV/06-218.64 SOM
2. GROUND FLOOR AREA = 79.72 SOM
3. FIRST FLOOR AREA = 46.05 SOM.
4. OPEN TERRACE AREA (100%) = 15.92 SOM.
5. JULIET BALCONY (100%) = 1.85 SOM.
6. TOTAL AREA = 150.07 SOM.
7. HARDSCAPE AREA = 20.31 SOM
8. HEIGHT OF BUILDING = 6.0 METER
9. CAR PARKING PROVIDED = 1 NO.

D. SIGNATURE OF OWNER:

MATREPRE INDIA PVT. LTD.
 Technical Signatory
 SIGNATURE OF OWNER

E. SIGNATURE OF ENGINEER:

Supriya Kumar Mondal
 D.C.E
 27 Park Street, No. 10/11/12
 SIGNATURE OF ENGINEER

F. PROJECT:

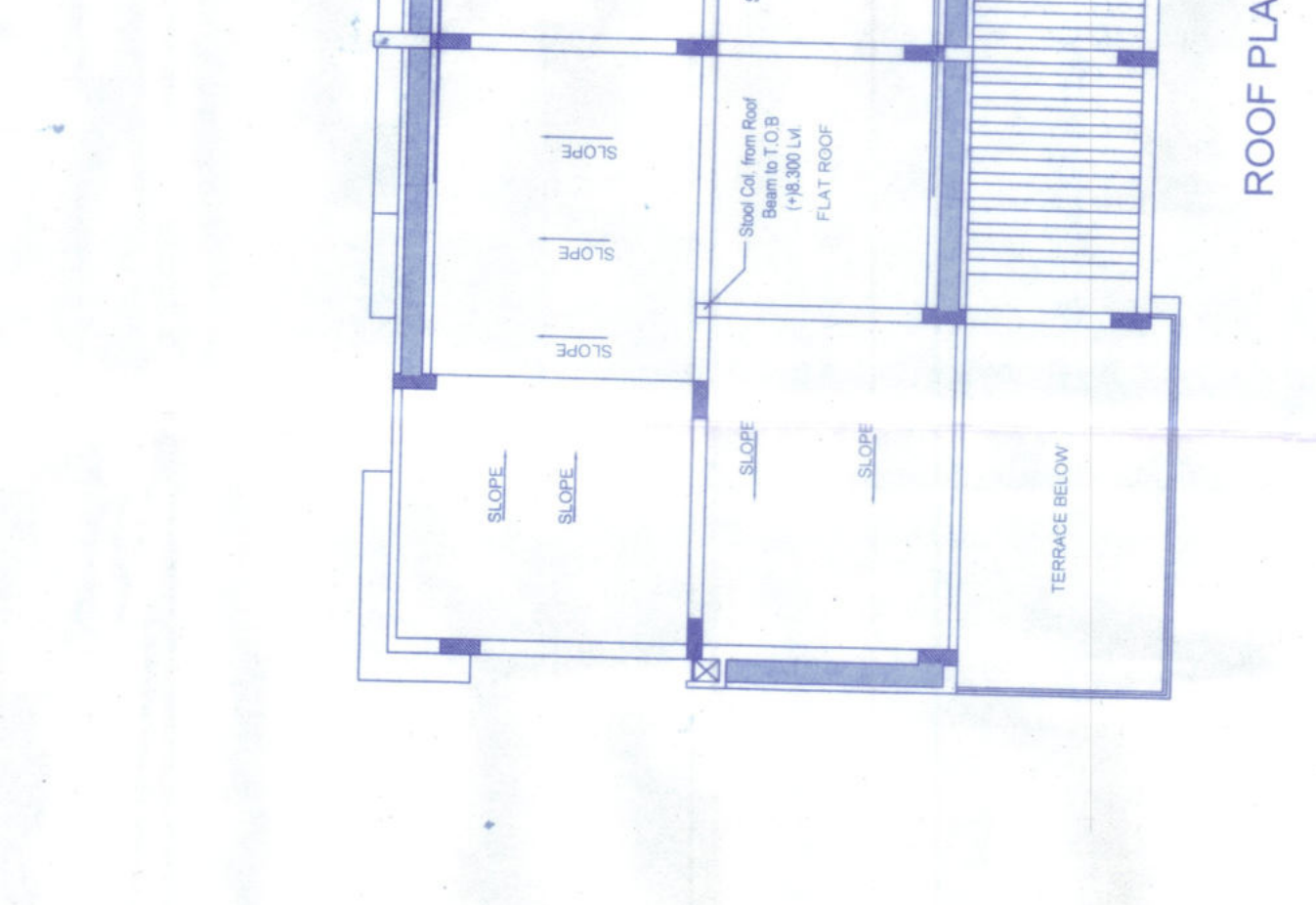
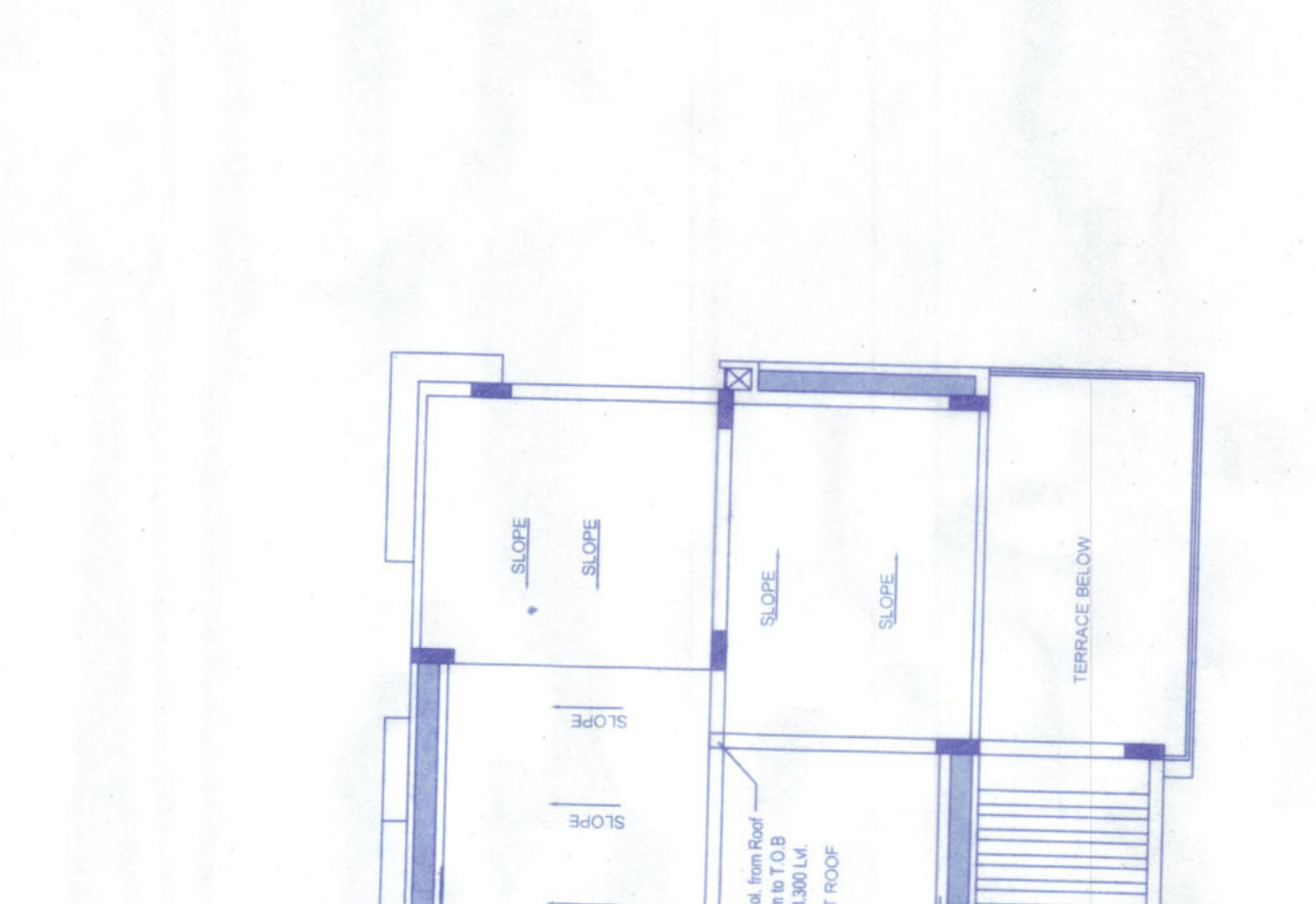
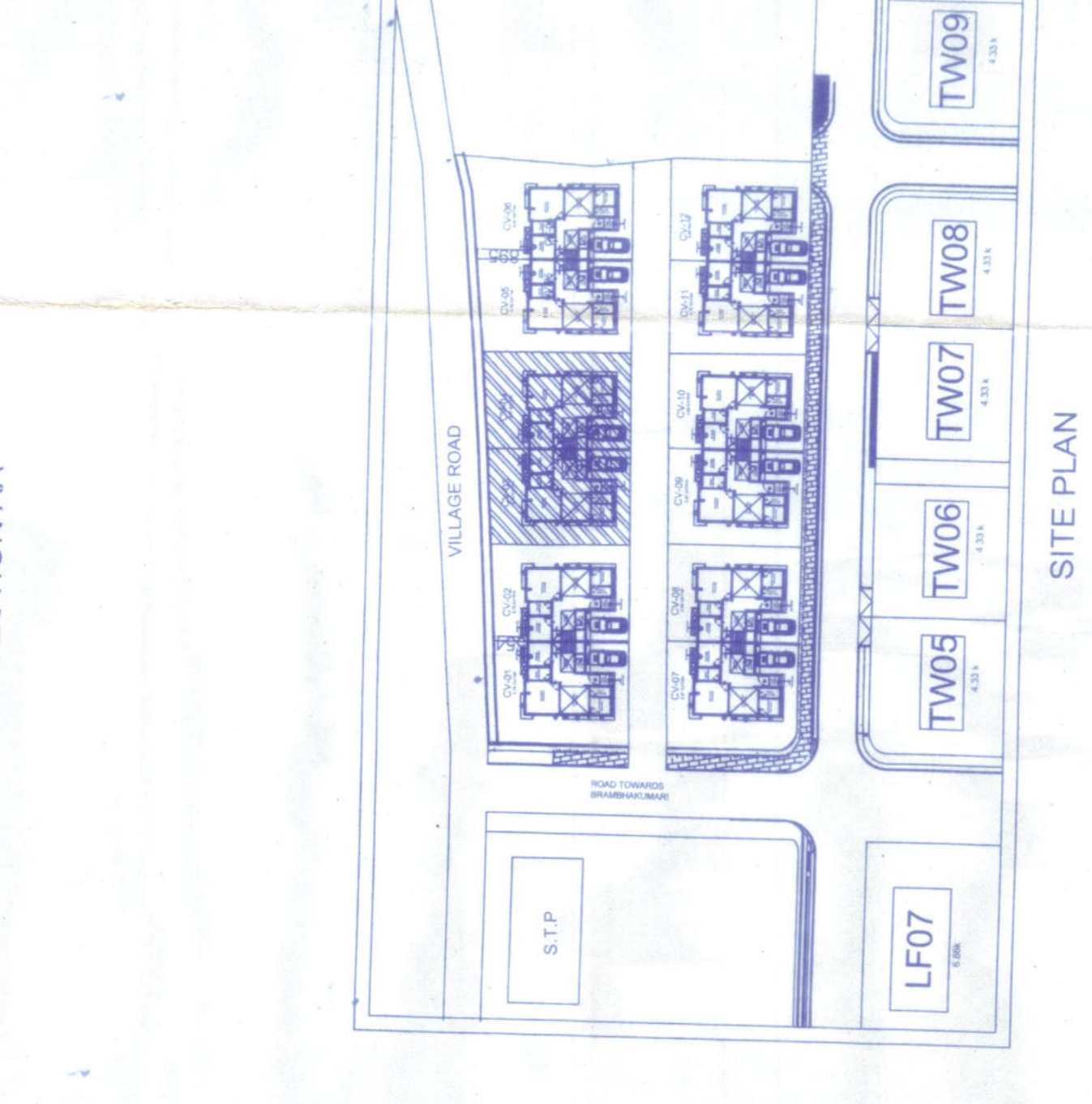
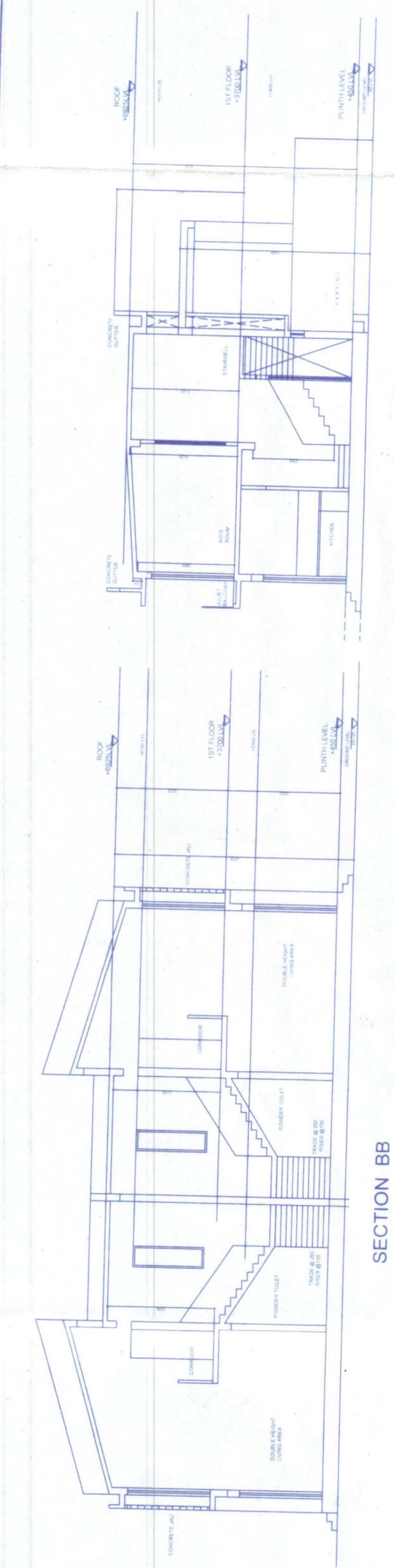
PROPOSED TYPICAL G+1 BUNGALOW FOR RESIDENTIAL COMPLEX AT PLOT NO CV-05806, DAG NO-1959, MOUZA - RAMKRISHNAPUR, P. S - BISHINUPUR, DIST. SOUTH 24 P. G. S, WEST BENGAL.

G. SANCTION DRAWING:

SITE PLAN, FLOOR'S PLAN, ROOF PLAN, ELEVATION, SECTION, LOCATION DETAILS OF SEPTIC TANK AND STRUCTURAL DETAILS OF PLOT NO CV-05806.
 Approved: P. S.

Product License
 13/05/2022
 DATE

DWG NO 01 NOTE DATE SHEET NO 01 REV 01

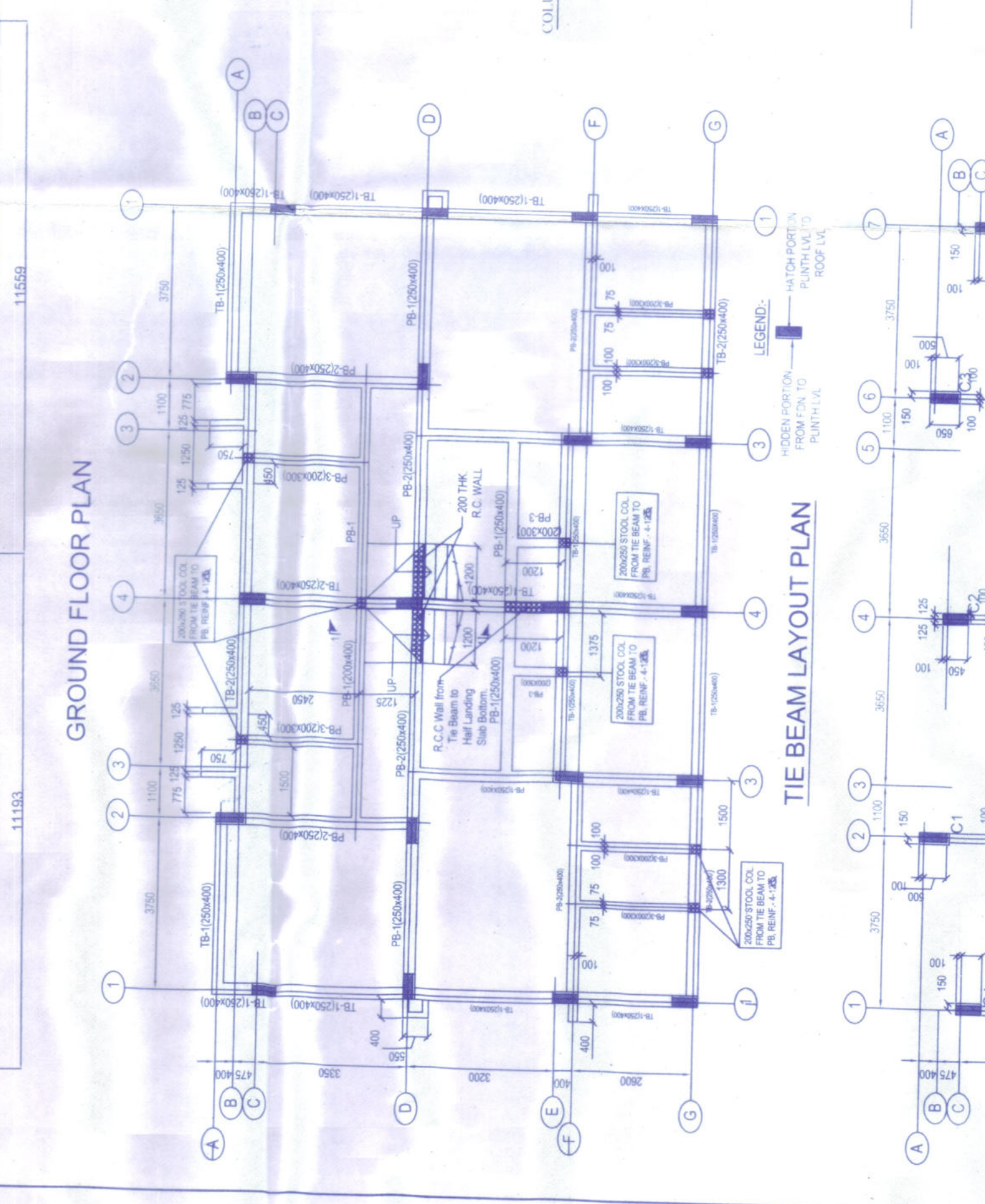
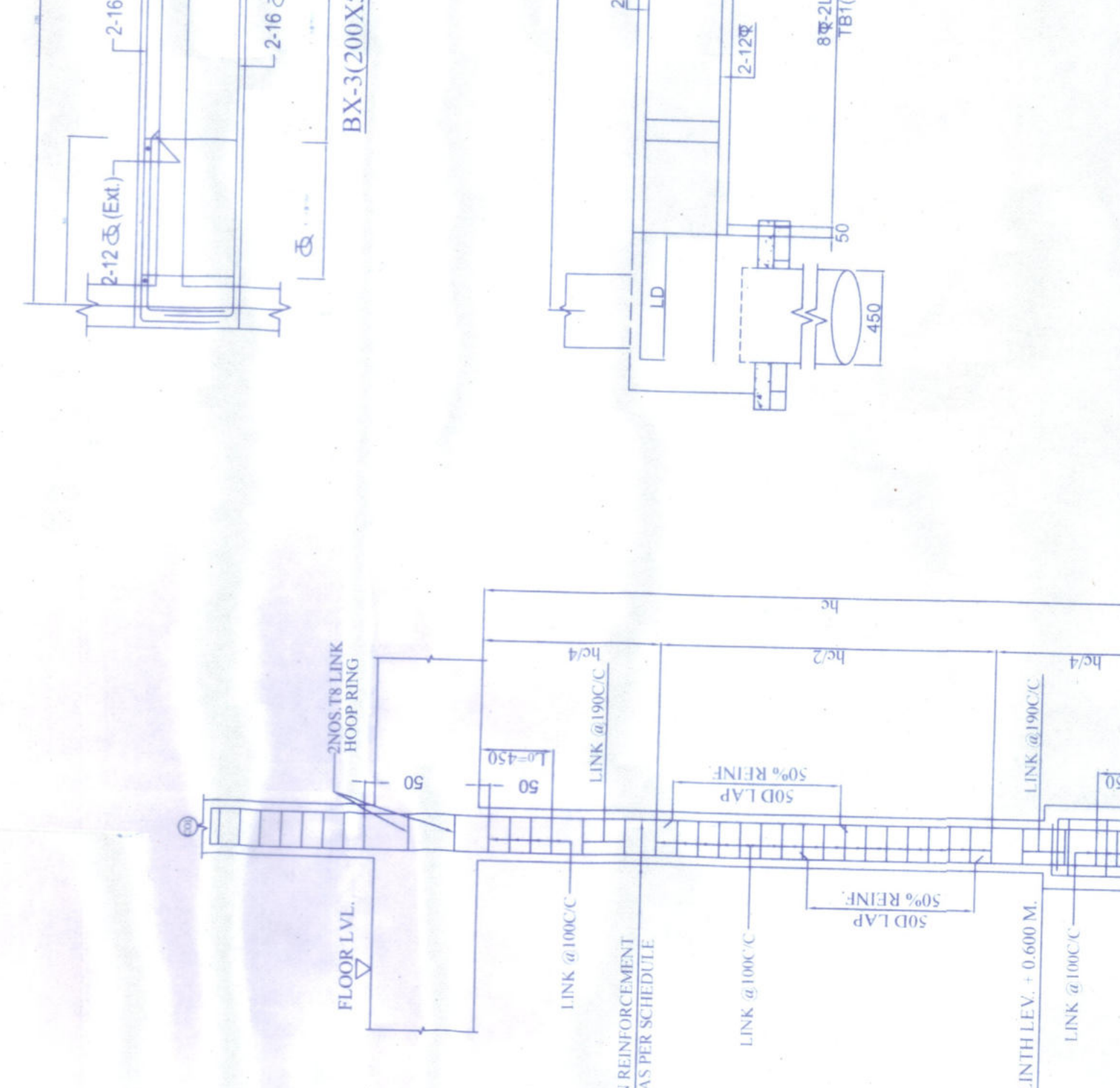


SCHEDULE OF COLUMN

COL. NO.	SIZE	REIN. AT TOP	REIN. AT BOT	REIN. AT SPAN	REMARKS
C1	300x300	4-18	4-18	4-18	FLOOR BEAM
C2	300x300	4-18	4-18	4-18	FLOOR BEAM
C3	300x300	4-18	4-18	4-18	FLOOR BEAM
C4	300x300	4-18	4-18	4-18	FLOOR BEAM
C5	300x300	4-18	4-18	4-18	FLOOR BEAM
C6	300x300	4-18	4-18	4-18	FLOOR BEAM
C7	300x300	4-18	4-18	4-18	FLOOR BEAM
C8	300x300	4-18	4-18	4-18	FLOOR BEAM
C9	300x300	4-18	4-18	4-18	FLOOR BEAM
C10	300x300	4-18	4-18	4-18	FLOOR BEAM
C11	300x300	4-18	4-18	4-18	FLOOR BEAM
C12	300x300	4-18	4-18	4-18	FLOOR BEAM
C13	300x300	4-18	4-18	4-18	FLOOR BEAM
C14	300x300	4-18	4-18	4-18	FLOOR BEAM
C15	300x300	4-18	4-18	4-18	FLOOR BEAM
C16	300x300	4-18	4-18	4-18	FLOOR BEAM
C17	300x300	4-18	4-18	4-18	FLOOR BEAM
C18	300x300	4-18	4-18	4-18	FLOOR BEAM
C19	300x300	4-18	4-18	4-18	FLOOR BEAM
C20	300x300	4-18	4-18	4-18	FLOOR BEAM

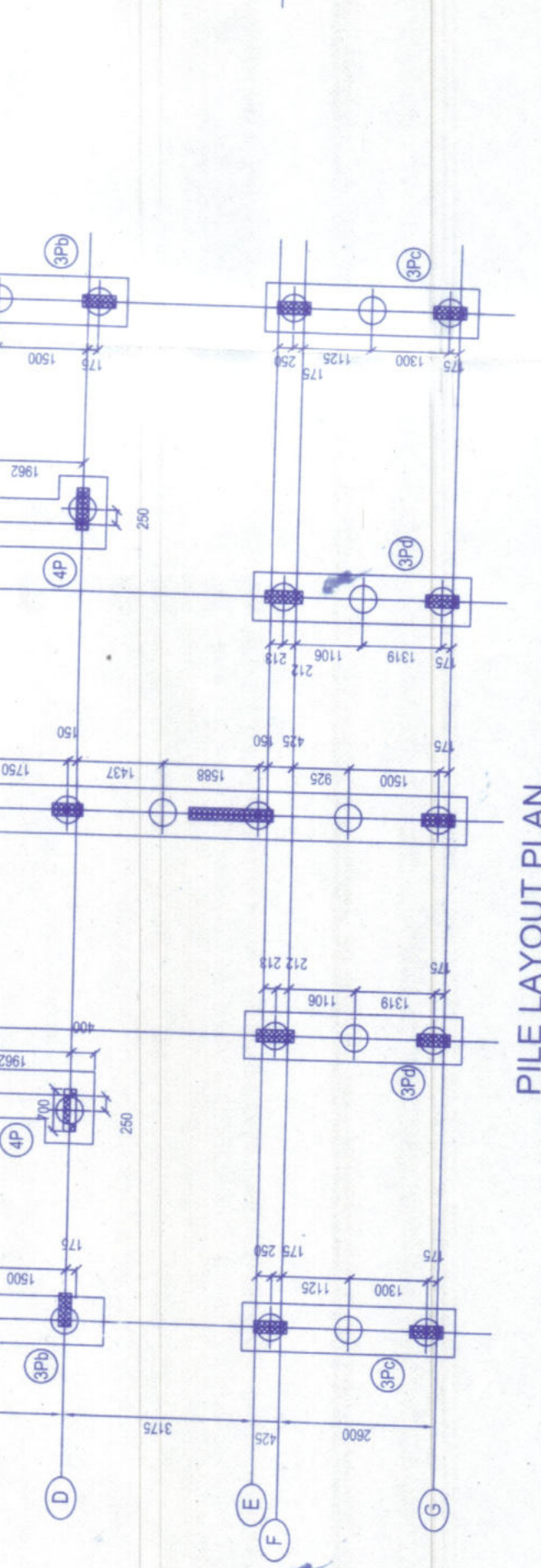
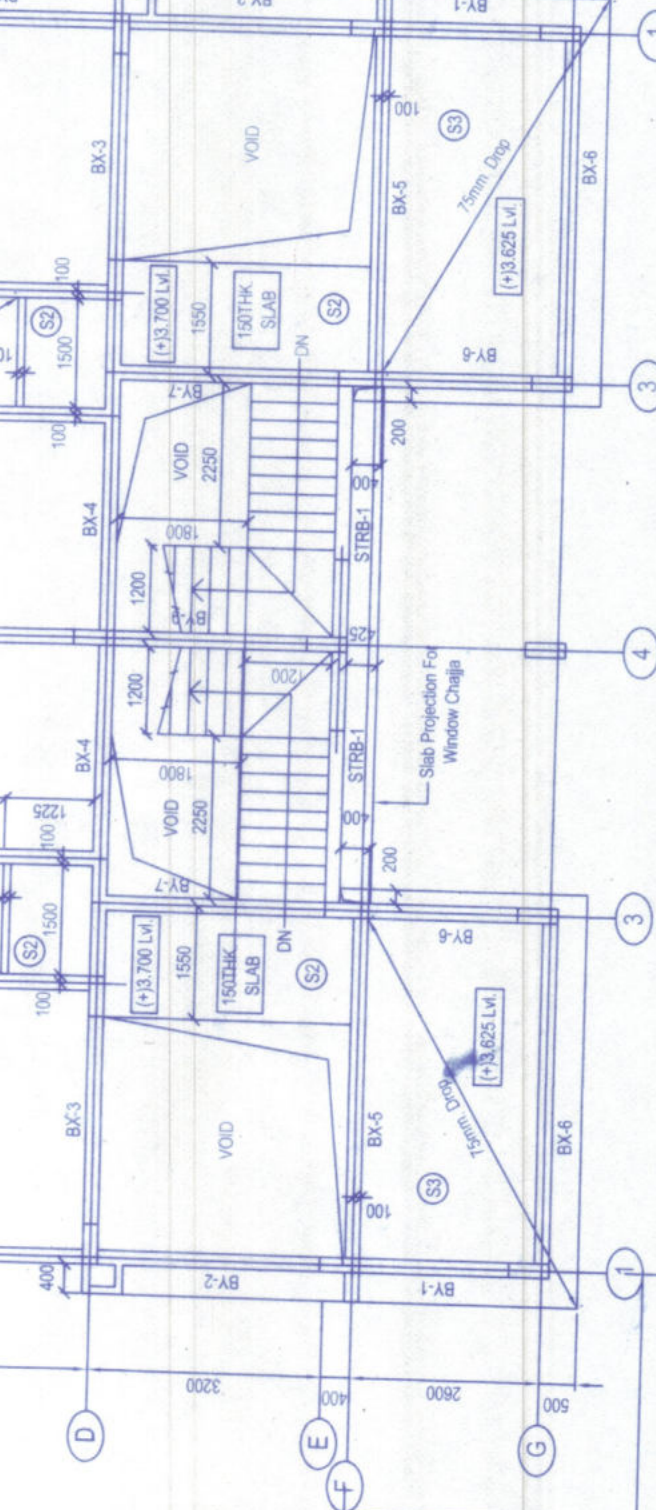
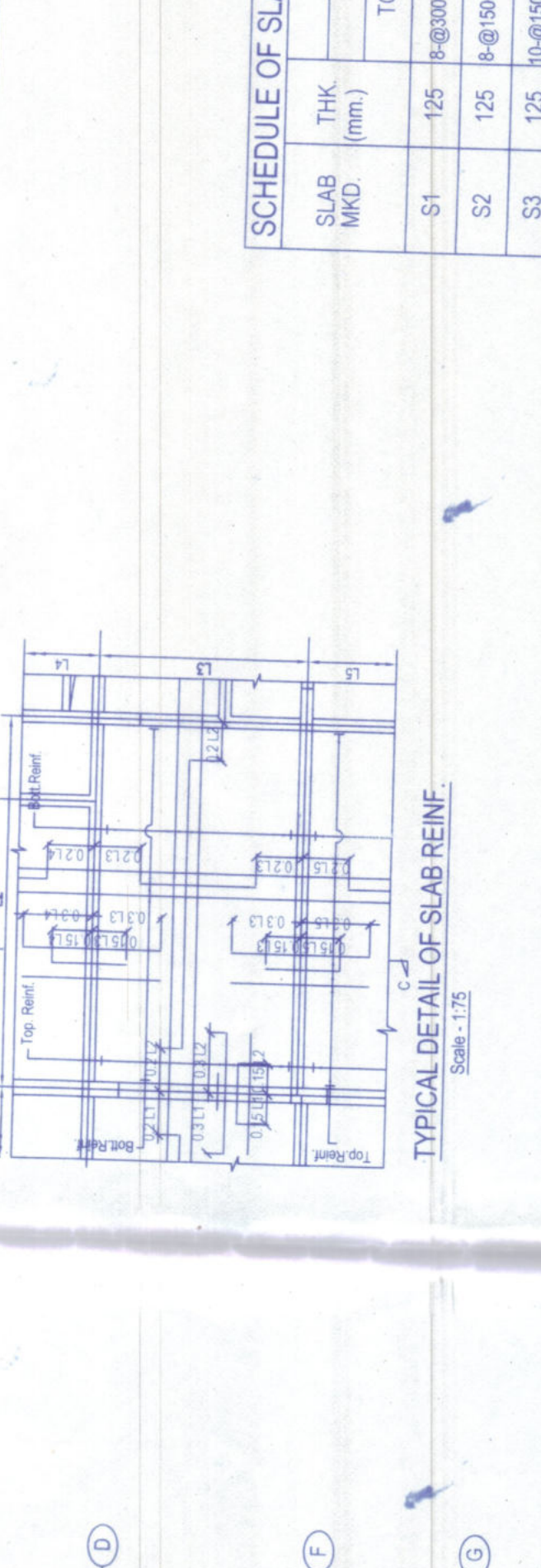
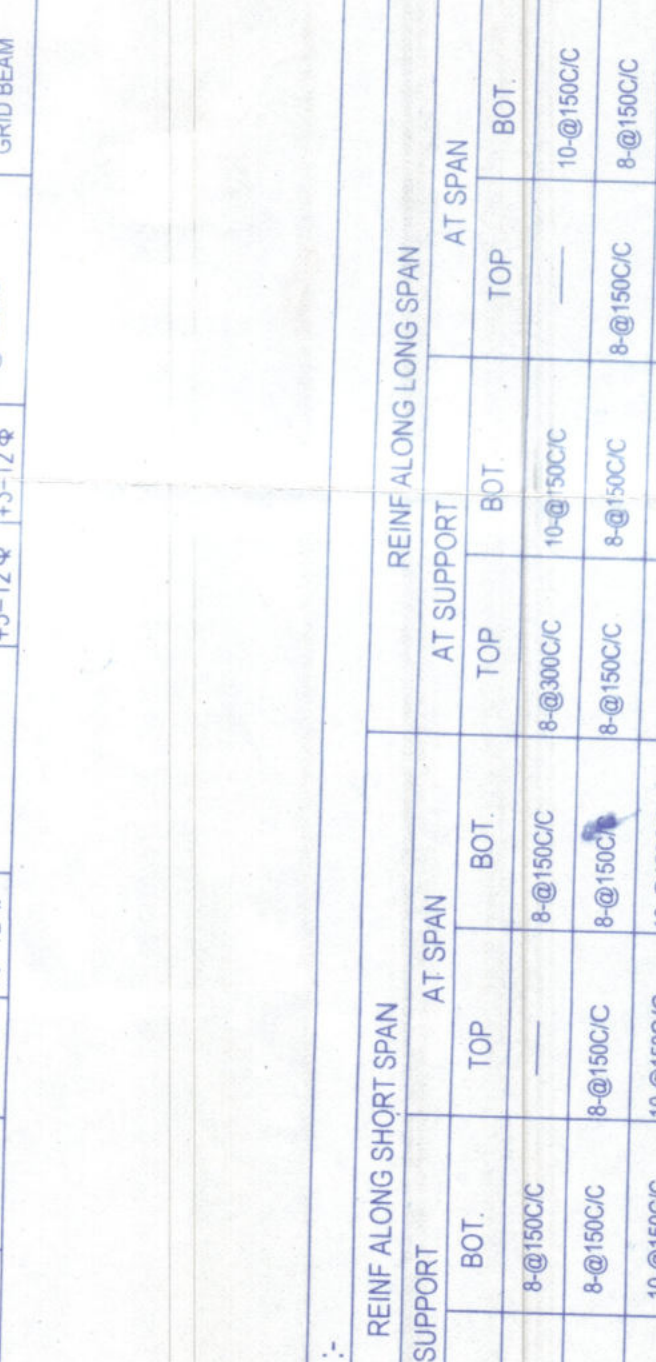
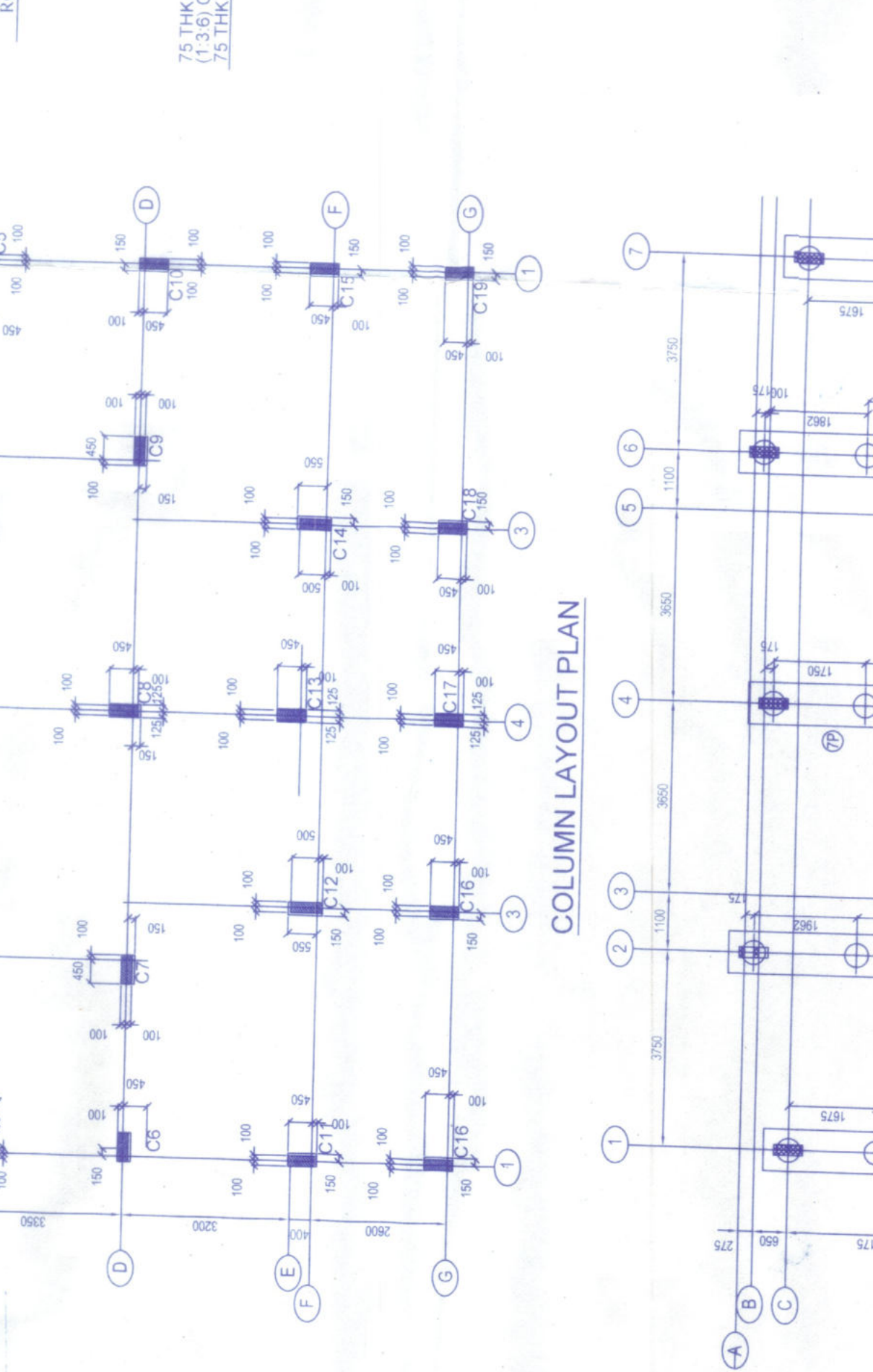
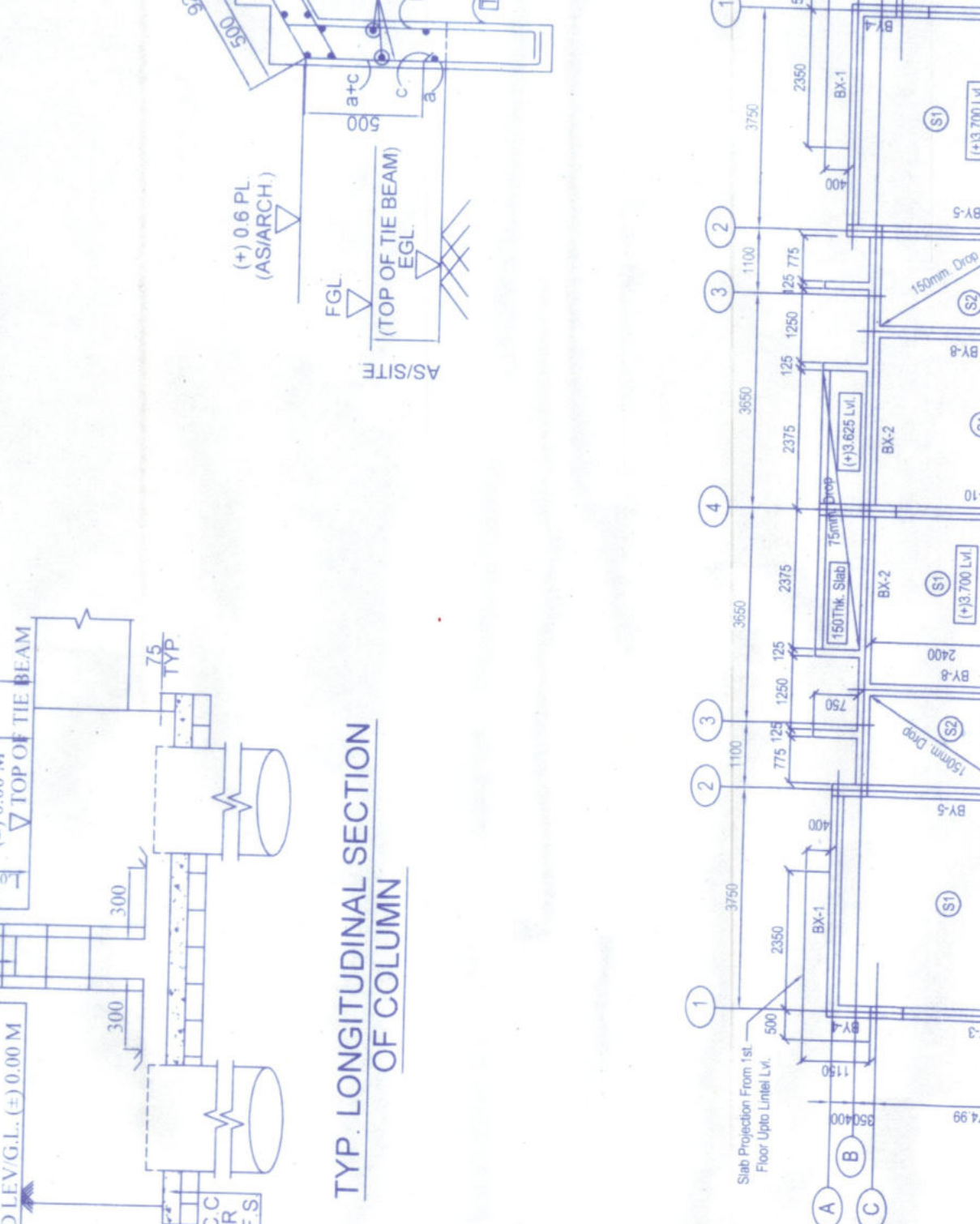
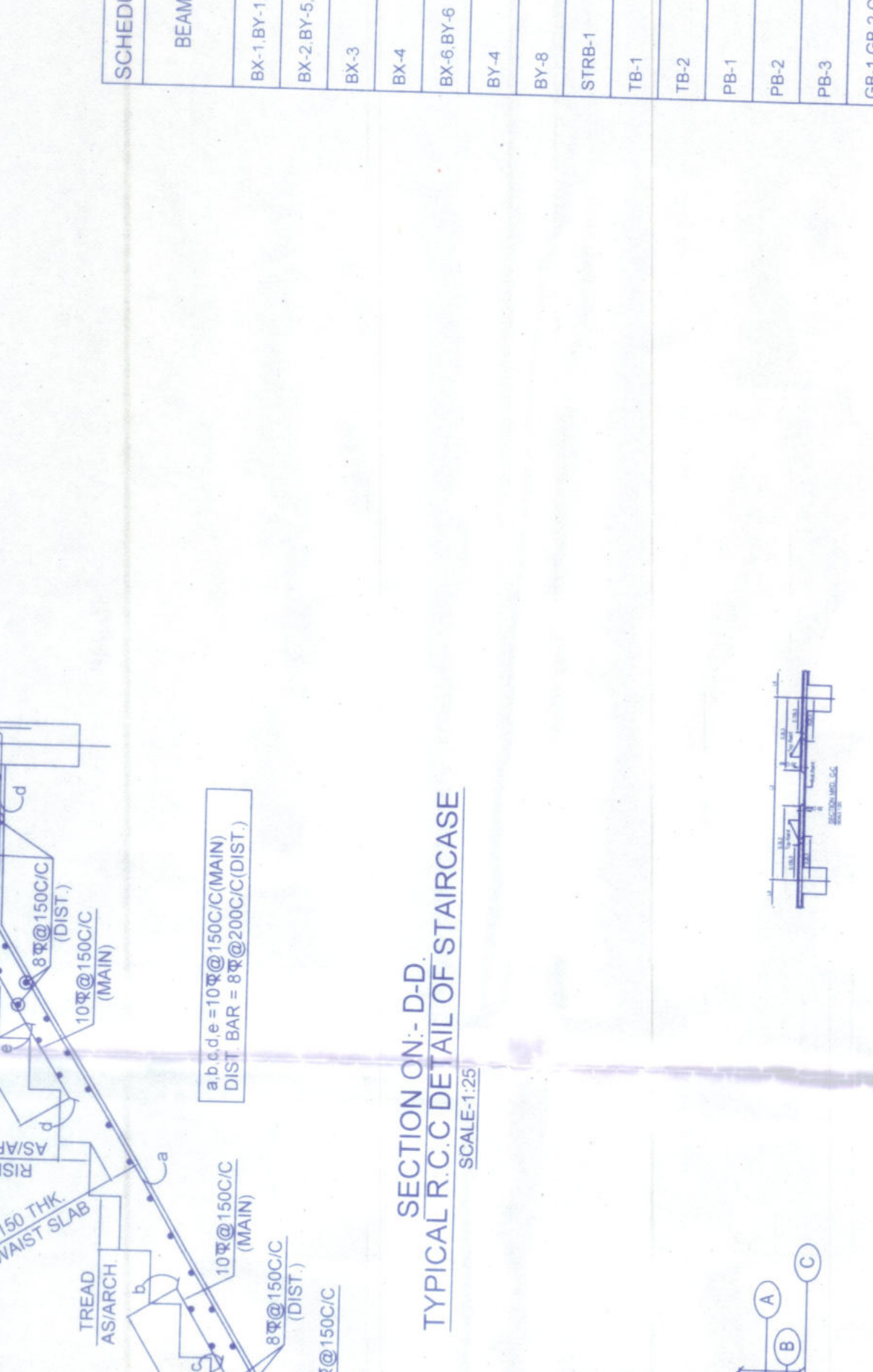
SCHEDULE OF BEAM

BEAM NO.	SIZE	REIN. AT SUPPORT	REIN. AT SPAN	REMARKS
BK.1 BY 1 BY 1 BY 1	200x200	2-18	2-18	FLOOR BEAM
BK.2 BY 2 BY 1 BY 1	200x200	2-18	2-18	FLOOR BEAM
BK.3	200x200	2-18	2-18	FLOOR BEAM
BK.4	200x200	2-18	2-18	FLOOR BEAM
BK.5 BY 1 BY 1	200x200	2-18	2-18	FLOOR BEAM
BK.6	200x200	2-18	2-18	FLOOR BEAM
BK.7	200x200	2-18	2-18	FLOOR BEAM
BK.8	200x200	2-18	2-18	FLOOR BEAM
BK.9	200x200	2-18	2-18	FLOOR BEAM
BK.10	200x200	2-18	2-18	FLOOR BEAM
BK.11	200x200	2-18	2-18	FLOOR BEAM
BK.12	200x200	2-18	2-18	FLOOR BEAM
BK.13	200x200	2-18	2-18	FLOOR BEAM
BK.14	200x200	2-18	2-18	FLOOR BEAM
BK.15	200x200	2-18	2-18	FLOOR BEAM
BK.16	200x200	2-18	2-18	FLOOR BEAM
BK.17	200x200	2-18	2-18	FLOOR BEAM
BK.18	200x200	2-18	2-18	FLOOR BEAM
BK.19	200x200	2-18	2-18	FLOOR BEAM
BK.20	200x200	2-18	2-18	FLOOR BEAM



SCHEDULE OF SLAB

SLAB NO.	THK (mm)	REIN. AT SUPPORT	REIN. ALONG LONG SPAN	REIN. ALONG SHORT SPAN	REMARKS
S1	125	4-18	4-18	4-18	FLOOR BEAM
S2	125	4-18	4-18	4-18	FLOOR BEAM
S3	125	4-18	4-18	4-18	FLOOR BEAM



PILE LAYOUT PLAN
 TOTAL NO. OF PILE = 31 Nos.